

CANCELLED

November 1, 2021

SOUTH KENTUCKY R.E.C.C
SOMERSET, KENTUCKY 40501

**KENTUCKY PUBLIC
SERVICE COMMISSION**

FOR: ENTIRE TERRITORY SERVED
P.S.C. KY NO. 7
13th REVISED SHEET NO. T-21
CANCELLING P.S.C. KY NO. 7
12th REVISED SHEET NO. T-21

CLASSIFICATION OF SERVICE
COGENERATION AND SMALL POWER PRODUCTION

POWER PURCHASE RATE SCHEDULE
OVER 100 kW FROM DISPATCHABLE GENERATION SOURCES

AVAILABILITY

Available only to qualified cogeneration or small power production facilities with a design capacity of over 100 kW which have executed a contract with South Kentucky Rural Electric Cooperative Corporation and East Kentucky Power Cooperative, Inc. ("EKPC") for the purchase of electric power by EKPC. Qualified cogeneration or small power production facilities must be able to be dispatched by EKPC. Non-dispatchable qualified cogeneration or small power production facilities are covered under a separate tariff. Pursuant to Federal Energy Regulatory Commission ("FERC") regulations 18 C.F.R. §§ 292.303(a), 292.309, and 292.310, EKPC is no longer obligated to purchase electric energy and/or capacity from qualifying cogeneration or small power production facilities with a net capacity of over 20MW.

RATES

The rates set forth below shall be used as the basis for negotiating a final purchase rate with qualifying facilities pursuant to Section 7 of 807 KAR 5:054.

1. Capacity - \$3.81 per kW per year is applicable if cogenerator or small power producer is dispatched by EKPC. (R)
2. Energy – A base payment per kWh is listed below for a time-differentiated basis or a non-time differentiated basis for the specified years. These rates include a market administration fee of \$0.00020 per kWh to cover EKPC's market participation costs. (I)

a. Time Differentiated Rates:

Year	<u>Winter</u>		<u>Summer</u>	
	On-Peak	Off-Peak	On-Peak	Off-Peak
2020	\$0.02946	\$0.02385	\$0.02770	\$0.01716
2021	\$0.02905	\$0.02308	\$0.02949	\$0.01763
2022	\$0.02893	\$0.02293	\$0.02864	\$0.01727
2023	\$0.02880	\$0.02284	\$0.02920	\$0.01775
2024	\$0.02844	\$0.02298	\$0.02917	\$0.01795

(R)
(R)
(R)
(R)
(N)

b. Non-Time Differentiated Rates:

Year	<u>2020</u>	<u>2021</u>	<u>2022</u>	<u>2023</u>	<u>2024*</u>
Rate	\$0.02461	\$0.02472	\$0.02439	\$0.02455	\$0.02454

(R N*)

DATE OF ISSUE: MARCH 31, 2020
DATE EFFECTIVE: JUNE 1, 2020
ISSUED BY: /s/ Kenneth E. Simmons
President & Chief Executive Officer

**KENTUCKY
PUBLIC SERVICE COMMISSION**

Kent A. Chandler
Executive Director



EFFECTIVE
6/1/2020
PURSUANT TO 807 KAR 5:011 SECTION 9 (1)

SOUTH KENTUCKY R.E.C.C
SOMERSET, KENTUCKY 42501

FOR: ENTIRE TERRITORY SERVED
P.S.C. KY NO. 7
5th REVISED SHEET NO. T-22
CANCELLING P.S.C. KY NO. 7
4th REVISED SHEET NO. T-22

OVER 100 kW FROM DISPATCHABLE GENERATION SOURCES (continued)

(T)

The on-peak and off-peak energy rates are applicable during the hours listed below for each season:

Winter (October - April)	
On-Peak	7:00 a.m. - 12:00 noon 5:00 p.m. - 10:00 p.m.
Off-Peak	12:00 noon - 5:00 p.m. 10:00 p.m. - 7:00 a.m.
Summer (May - September)	
On-Peak	10:00 a.m. - 10:00 p.m.
Off-Peak	10:00 p.m. - 10:00 a.m.

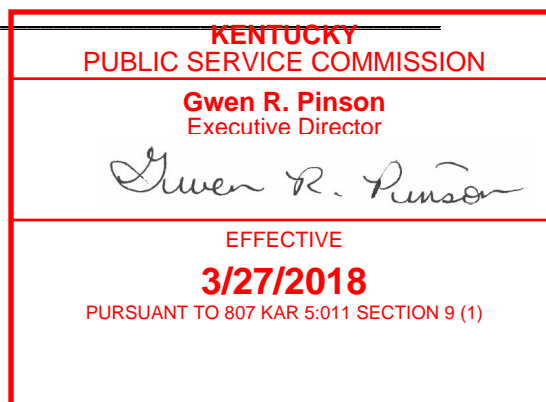


TERMS AND CONDITIONS

1. Pursuant to FERC regulations 18 C.F.R. §§ 292.303(a), 292.309, and 292.310, EKPC is no longer obligated to purchase electric energy and/or capacity from qualifying cogeneration or small power production facilities with a net capacity of over 20 MW. (N)
2. All power from a Qualifying Facility ("QF") will be sold only to EKPC. (T)
3. Seller must provide good quality electric power within a reasonable range of voltage, frequency, flicker, harmonic currents, and power factor.
4. QF shall provide reasonable protection for EKPC and South Kentucky Rural Electric Cooperative Corporation. (T)
5. QF shall design, construct, install, own, operate, and maintain the QF in accordance with all applicable codes, laws, regulations, and generally accepted utility practices. (T)
6. QF shall reimburse EKPC and South Kentucky Rural Electric Cooperative Corporation for all costs incurred as a result of interconnecting with the QF, including operation, maintenance, administration, and billing. (T)

(N)
↓
(T)

DATE OF ISSUE: APRIL 16, 2018
DATE EFFECTIVE: Service rendered on and after MARCH 27, 2018
ISSUED BY: /s/ Dennis Holt,
President & Chief Executive Officer
BY AUTHORITY OF ORDER OF THE PUBLIC SERVICE
COMMISSION IN CASE NO. 2017-00212
DATED MARCH 27, 2018.



SOUTH KENTUCKY R.E.C.C.
SOMERSET, KENTUCKY 42501

FOR: ENTIRE TERRITORY SERVED
P.S.C. KY NO. 7
5th REVISED SHEET NO. T-23
CANCELLING P.S.C. KY NO. 7
4th REVISED SHEET NO. T-23

OVER 100 kW FROM DISPATCHABLE GENERATION SOURCES (continued)

7. QF shall obtain insurance in the following minimum amounts for each occurrence: (T)
- a. Public Liability for Bodily Injury - \$1,000,000.00
 - b. Property Damage - \$500,000.00
8. Initial contract term shall be for a minimum of five years.
9. QFs proposing to supply as available (non-firm) electric power shall not be entitled to a capacity payment. (T)
10. Qualifying cogeneration and small power production facilities must meet the definition set forth in 807 KAR 5:054 to be eligible for this tariff.
11. The QF is responsible for the cost of all facilities on QF's site to meet and maintain eligibility as a PJM interconnection, LLC ("PJM") capacity resource and the QF is subject to all non-performance cost levied by PJM or Successor, the Kentucky Public Service Commission, or other applicable entity related to non-performance of the QF's facility. (N)
12. In negotiating a final purchase rate, consideration shall be given to the factors affecting purchase rates as set forth in 807 Kar 5:054, Section 7(5)(a). ↓
13. Updated rates will be filed with the Public Service Commission of Kentucky by March 31 of each year.

CANCELLED

November 1, 2021

**KENTUCKY PUBLIC
SERVICE COMMISSION**

DATE OF ISSUE: APRIL 16, 2018

DATE EFFECTIVE: Service rendered on and after MARCH 27, 2018

ISSUED BY: /s/ Dennis Holt,
President & Chief Executive Officer

BY AUTHORITY OF ORDER OF THE PUBLIC SERVICE
COMMISSION IN CASE NO. 2017-00212
DATED MARCH 27, 2018.

**KENTUCKY
PUBLIC SERVICE COMMISSION**

Gwen R. Pinson
Executive Director

Gwen R. Pinson

EFFECTIVE
3/27/2018
PURSUANT TO 807 KAR 5:011 SECTION 9 (1)

SOUTH KENTUCKY R.E.C.C.
SOMERSET, KENTUCKY 42501

FOR: ENTIRE TERRITORY SERVED
P.S.C. KY NO. 7
13th REVISED SHEET NO T-24
CANCELLING P.S.C. KY NO. 7
12th REVISED SHEET NO. T-24

**CLASSIFICATION OF SERVICE
COGENERATION AND SMALL POWER PRODUCTION**

**POWER PURCHASE RATE SCHEDULE
EQUAL TO OR LESS THAN 100 kW FROM DISPATCHABLE GENERATION SOURCES**

AVAILABILITY

Available only to qualified cogeneration or small power production facilities with a design capacity of 100 kW or less which have executed a contract with South Kentucky Rural Electric Cooperative Corporation and East Kentucky Power Cooperative, Inc. ("EKPC") for the purchase of electric power by EKPC. Qualified cogeneration or small power production facilities must be able to be dispatched by EKPC. Non-dispatchable qualified cogeneration or small power production facilities are covered under a separate tariff.

RATES

- 1. Capacity - \$3.81 per kW per year is applicable if cogenerator or small power producer is dispatched by EKPC. (R)
- 2. Energy – A base payment per kWh is listed below for a time-differentiated basis or a non-time differentiated basis for the specified years. These rates include a market administration fee of \$0.00020 per kWh to cover EKPC's market participation costs. (I)
 - a. Time Differentiated Rates:

Year	<u>Winter</u>		<u>Summer</u>	
	On-Peak	Off-Peak	On-Peak	Off-Peak
2020	\$0.02946	\$0.02385	\$0.02770	\$0.01716
2021	\$0.02905	\$0.02308	\$0.02949	\$0.01763
2022	\$0.02893	\$0.02293	\$0.02864	\$0.01727
2023	\$0.02880	\$0.02284	\$0.02920	\$0.01775
2024	\$0.02844	\$0.02298	\$0.02917	\$0.01795

(R)
(R)
(R)
(R)
(N)

- b. Non-Time Differentiated Rates:

Year	2020	2021	2022	2023	2024*
Rate	\$0.02461	\$0.02472	\$0.02439	\$0.02455	\$0.02454*

(R N*)

DATE OF ISSUE: MARCH 31, 2020

DATE EFFECTIVE: JUNE 1, 2020

ISSUED BY: /s/ Kenneth E. Simmons
President & Chief Executive Officer

CANCELLED

November 1, 2021

**KENTUCKY PUBLIC
SERVICE COMMISSION**

**KENTUCKY
PUBLIC SERVICE COMMISSION**

Kent A. Chandler
Executive Director



EFFECTIVE
6/1/2020
PURSUANT TO 807 KAR 5:011 SECTION 9 (1)

SOUTH KENTUCKY R.E.C.C.
SOMERSET, KENTUCKY 42501

FOR: ENTIRE TERRITORY SERVED
P.S.C. KY NO. 7
5th REVISED SHEET NO T-25
CANCELLING P.S.C. KY NO. 7
4th REVISED SHEET NO. T-25

EQUAL TO OR LESS THAN 100 kW FROM DISPATCHABLE GENERATION SOURCES (continued)

(T)

The on-peak and off-peak energy rates are applicable during the hours listed below for each season:

Winter (October - April)

On-Peak 7:00 a.m. - 12:00 noon
5:00 p.m. - 10:00 p.m.

Off-Peak 12:00 noon - 5:00 p.m.
10:00 p.m. - 7:00 a.m.

Summer (May - September)

On-Peak 10:00 a.m. - 10:00 p.m.

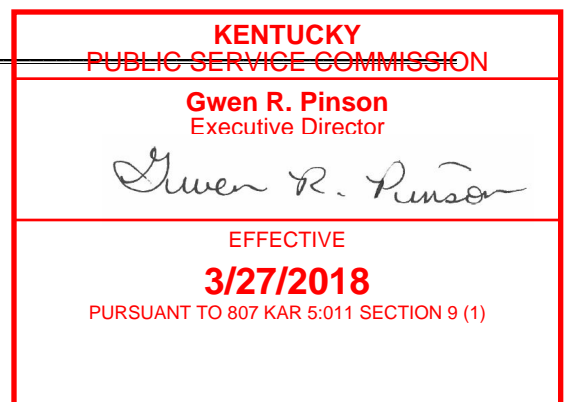
Off-Peak 10:00 p.m. - 10:00 a.m.



TERMS AND CONDITIONS

1. All power from a Qualifying Facility ("QF") will be sold only to EKPC. (T)
2. Seller must provide good quality electric power within a reasonable range of voltage, frequency, flicker, harmonic currents, and power factor.
3. QF shall provide reasonable protection for EKPC and South Kentucky Rural Electric Cooperative Corporation. (T)
4. QF shall design, construct, install, own, operate, and maintain the QF in accordance with all applicable codes, laws, regulations, and generally accepted utility practices. (T)
5. QF shall reimburse EKPC and South Kentucky Rural Electric Cooperative Corporation for all costs incurred as a result of interconnecting with the QF, including operation, maintenance, administration, and billing. (T)
6. QF shall obtain insurance in the following minimum amounts for each occurrence: (T)
 - a. Public Liability for Bodily Injury - \$1,000,000.00
 - b. Property Damage - \$500,000.00
7. Initial contract term shall be for a minimum of five years.
8. QFs proposing to supply as available (non-firm) electric power shall not be entitled to a capacity payment. (T)

DATE OF ISSUE: APRIL 16, 2018
DATE EFFECTIVE: Service rendered on and after MARCH 27, 2018
ISSUED BY: /s/ Dennis Holt,
President & Chief Executive Officer
BY AUTHORITY OF ORDER OF THE PUBLIC SERVICE
COMMISSION IN CASE NO. 2017-00212
DATED MARCH 27, 2018.



SOUTH KENTUCKY R.E.C.C.
SOMERSET, KENTUCKY 42501

FOR: ENTIRE TERRITORY SERVED
P.S.C. KY NO. 7
5th REVISED SHEET NO T-26
CANCELLING P.S.C. KY NO. 7
4th REVISED SHEET NO. T-26

EQUAL TO OR LESS THAN 100 kW FROM DISPATCHABLE GENERATION SOURCES (continued)

9. Qualifying cogeneration and small power production facilities must meet the definition set forth in 807 KAR 5:054 to be eligible for this tariff.
10. The QF is responsible for the cost of all facilities on QF's site to meet and maintain eligibility as a PJM capacity resource and the QF is subject to all non-performance cost levied by PJM or Successor, the Kentucky Public Service Commission, or other applicable entity related to non-performance of the QF's facility.
11. Updated rates will be filed with the Public Service Commission of Kentucky by March 31 of each year.

(T)

(N)

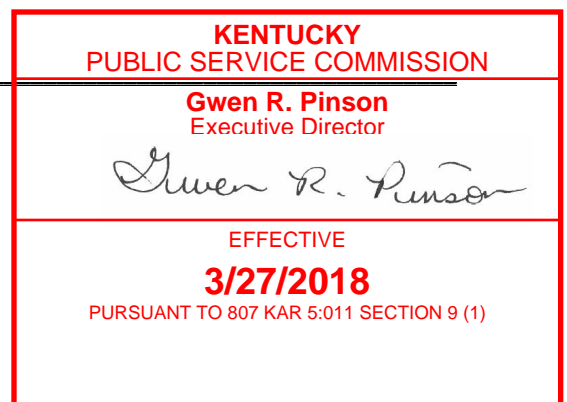


DATE OF ISSUE: APRIL 16, 2018

DATE EFFECTIVE: Service rendered on and after MARCH 27, 2018

ISSUED BY: /s/ Dennis Holt,
President & Chief Executive Officer

BY AUTHORITY OF ORDER OF THE PUBLIC SERVICE
COMMISSION IN CASE NO. 2017-00212
DATED MARCH 27, 2018.



SOUTH KENTUCKY R.E.C.C.
SOMERSET, KENTUCKY 42501

FOR: ENTIRE TERRITORY SERVED
P.S.C. KY NO. 7
3RD REVISED SHEET NO. T-26.1
CANCELLING P.S.C. KY NO. 7
2ND REVISED SHEET NO. T-26.1

CLASSIFICATION OF SERVICE
COGENERATION AND SMALL POWER PRODUCTION

POWER PURCHASE RATE SCHEDULE
OVER 100 kW FROM NON-DISPATCHABLE GENERATION SOURCES

AVAILABILITY

Available only to qualified cogeneration or small power production facilities that are not able to be dispatched by East Kentucky Power Cooperative ("EKPC") which have executed a contract with EKPC and South Kentucky Rural Electric Cooperative Corporation for the purchase of electric power by EKPC. Pursuant to Federal Energy Regulatory Commission ("FERC") regulations 18 C.F.R. §§ 292.303(a), 292.309, and 292.310, EKPC is no longer obligated to purchase electric energy and/or capacity from qualifying cogeneration or small power production facilities with a net capacity of over 20 MW.

RATES

Qualified facilities ("QF") will be credited monthly for the electric power produced by non-dispatchable generation facilities at the value of the real-time locational marginal price for energy set by PJM at the EKPC zonal node during each hour of the day. These payments will be offset by a market administration fee of \$0.00020 per kWh to cover EKPC's market participation costs. (I)

TERMS AND CONDITIONS

1. Pursuant to FERC regulations 18 C.F.R. §§ 292.303(a), 292.309, and 292.310, EKPC is no longer obligated to purchase electric energy and/or capacity from qualifying cogeneration or small power production facilities with a net capacity of over 20 MW.
2. All power from a QF will be sold only to EKPC.
3. Seller must provide good quality electric power within a reasonable range of voltage, frequency, flicker, harmonic currents, and power factor.
4. QF shall provide reasonable protection for EKPC and South Kentucky Rural Electric Cooperative Corporation.
5. QF shall design, construct, install, own, operate, and maintain the QF in accordance with all applicable codes, laws, regulations, and general accepted utility practices.
6. QF shall reimburse EKPC and South Kentucky Rural Electric Cooperative Corporation for all costs incurred as a result of interconnecting with the QF, including operation, maintenance, administration, and billing.

DATE OF ISSUE: MARCH 31, 2020

DATE EFFECTIVE: JUNE 1, 2020

ISSUED BY: /s/ Kenneth E. Simmons
President & Chief Executive Officer

CANCELLED

November 1, 2021

**KENTUCKY PUBLIC
SERVICE COMMISSION**

**KENTUCKY
PUBLIC SERVICE COMMISSION**

Kent A. Chandler
Executive Director



EFFECTIVE

6/1/2020

PURSUANT TO 807 KAR 5:011 SECTION 9 (1)

CANCELLED

November 1, 2021

SOUTH KENTUCKY R.E.C.C.
SOMERSET, KENTUCKY 42301

**KENTUCKY PUBLIC
SERVICE COMMISSION**

FOR: ENTIRE TERRITORY SERVED
P.S.C. KY NO. 7
3RD REVISED SHEET NO. T-26.3
CANCELLING P.S.C. KY NO. 7
2ND REVISED SHEET NO. T-26.3

**CLASSIFICATION OF SERVICE
COGENERATION AND SMALL POWER PRODUCTION**

**POWER PURCHASE RATE SCHEDULE
100 kW OR LESS FROM NON-DISPATCHABLE GENERATION SOURCES**

AVAILABILITY

Available only to qualified cogeneration or small power production facilities that are not able to be dispatched by East Kentucky Power Cooperative ("EKPC") which have executed a contract with EKPC and South Kentucky Rural Electric Cooperative Corporation for the purchase of electric power by EKPC.

RATES

Qualified facilities ("QF") will be credited monthly for the electric power produced by non-dispatchable generation facilities at the value of the real-time locational marginal price for energy set by PJM at the EKPC zonal node during each hour of the day. These payments will be offset by a market administration fee of \$0.00020 per kWh to cover EKPC's market participation costs. (I)

TERMS AND CONDITIONS

1. All power from a QF will be sold only to EKPC.
2. Seller must provide good quality electric power within a reasonable range of voltage, frequency, flicker, harmonic currents, and power factor.
3. QF shall provide reasonable protection for EKPC and South Kentucky Rural Electric Cooperative Corporation.
4. QF shall design, construct, install, own, operate, and maintain the QF in accordance with all applicable codes, laws, regulations, and general accepted utility practices.
5. QF shall reimburse EKPC and South Kentucky Rural Electric Cooperative Corporation for all costs incurred as a result of interconnecting with the QF, including operation, maintenance, administration, and billing.
6. QF shall obtain insurance in the following minimum amounts for each occurrence:
 - a. Public Liability for Bodily Injury - \$1,000,000.00.
 - b. Property Damage - \$500,000.00
7. Initial contract term shall be for a minimum of five years.
8. QFs proposing to supply as available (non-firm) electric power shall not be entitled to a capacity payment.

DATE OF ISSUE: MARCH 31, 2020

DATE EFFECTIVE: JUNE 1, 2020

ISSUED BY: /s/ Kenneth E. Simmons
President & Chief Executive Officer

**KENTUCKY
PUBLIC SERVICE COMMISSION**

Kent A. Chandler
Executive Director



**EFFECTIVE
6/1/2020**

PURSUANT TO 807 KAR 5:011 SECTION 9 (1)